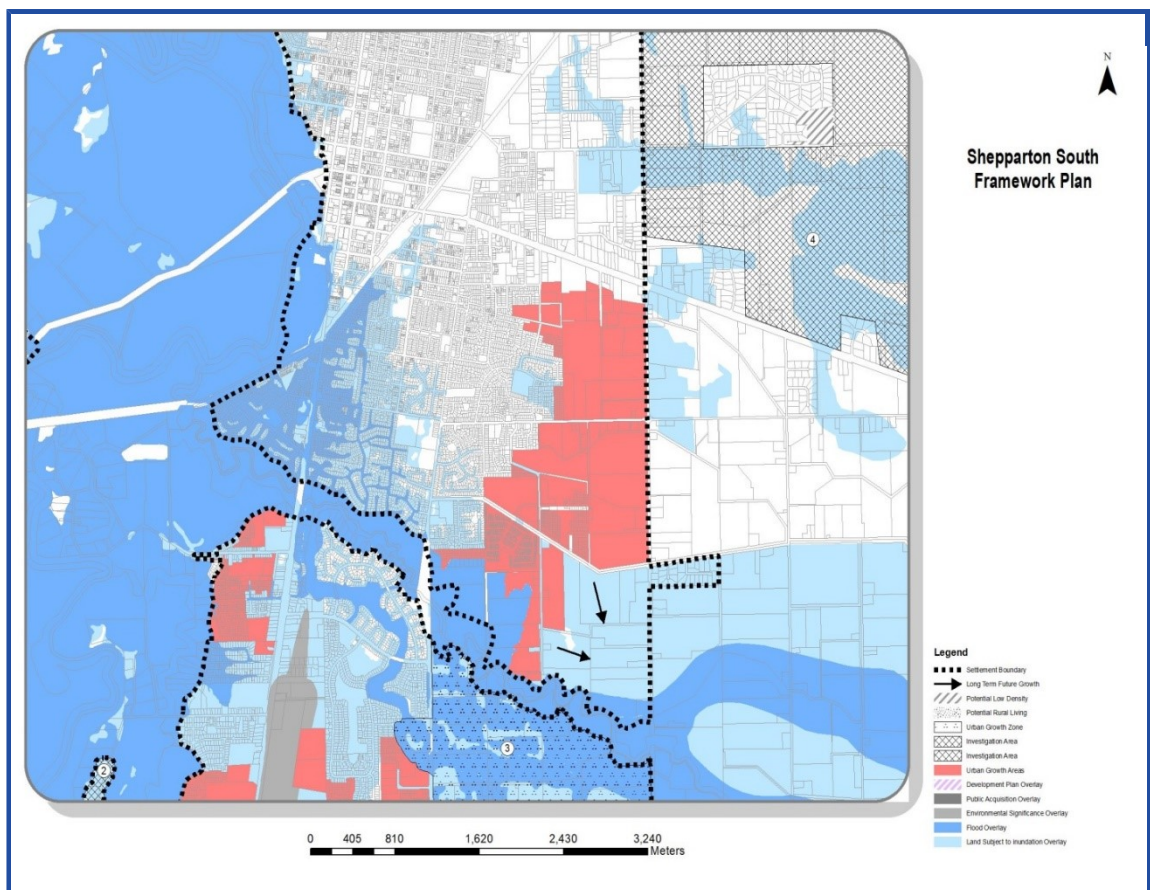
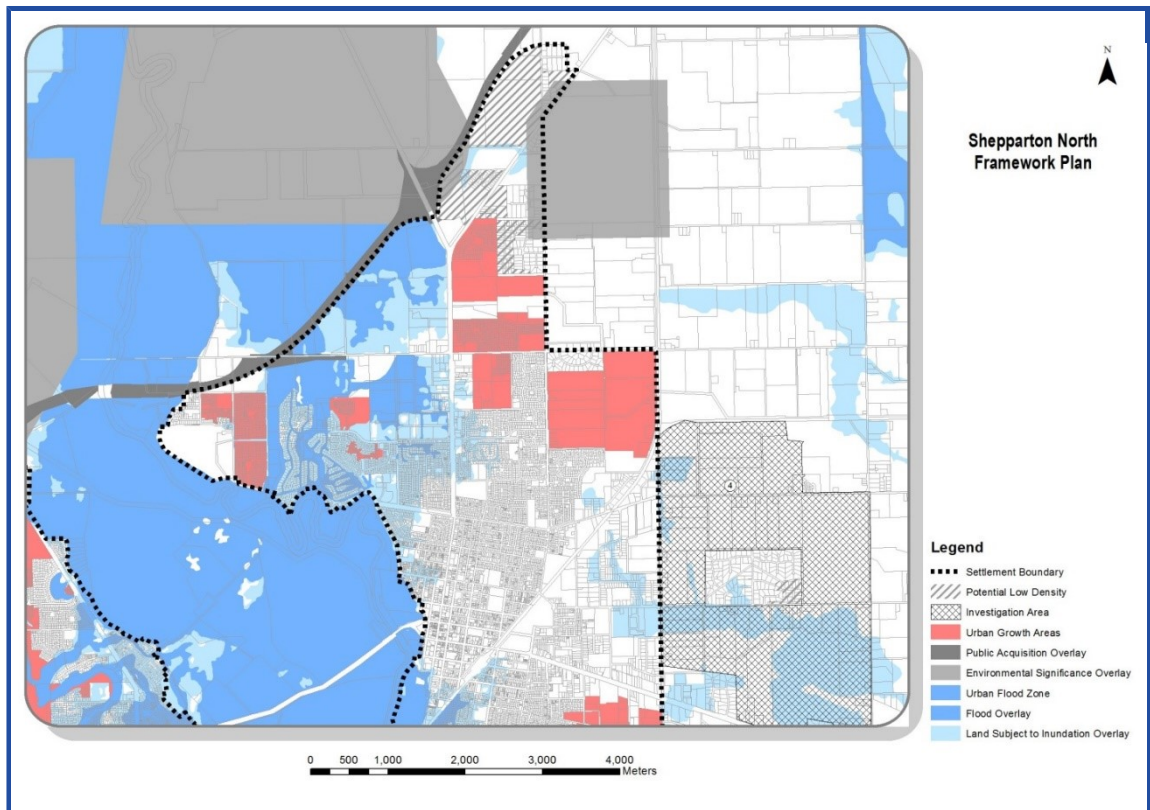


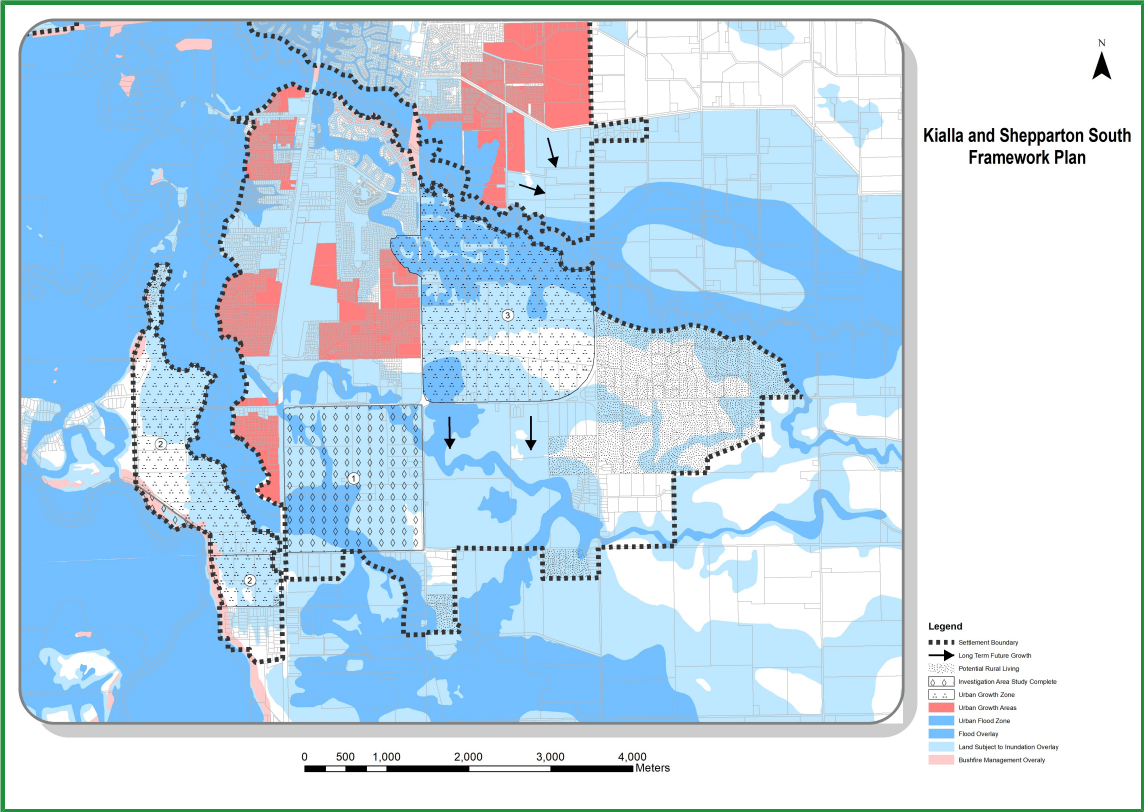
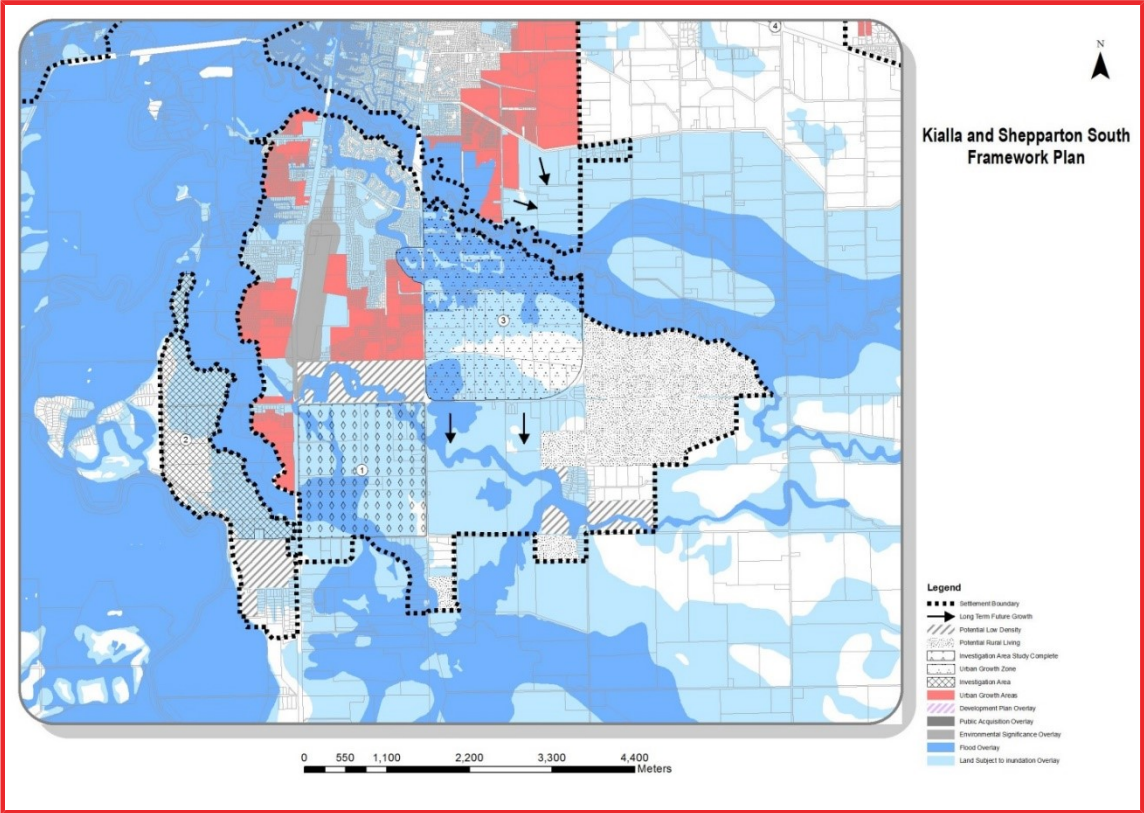
02.04

STRATEGIC FRAMEWORK PLANS

03/03/2022 - / - / - - - - -
 G2+0gshProposed C239gsh The plans contained in Clause 02.04 are to be read in conjunction with the strategic directions in Clause 02.03.

Shepparton Framework Plans





GREATER SHEPPARTON PLANNING SCHEME

